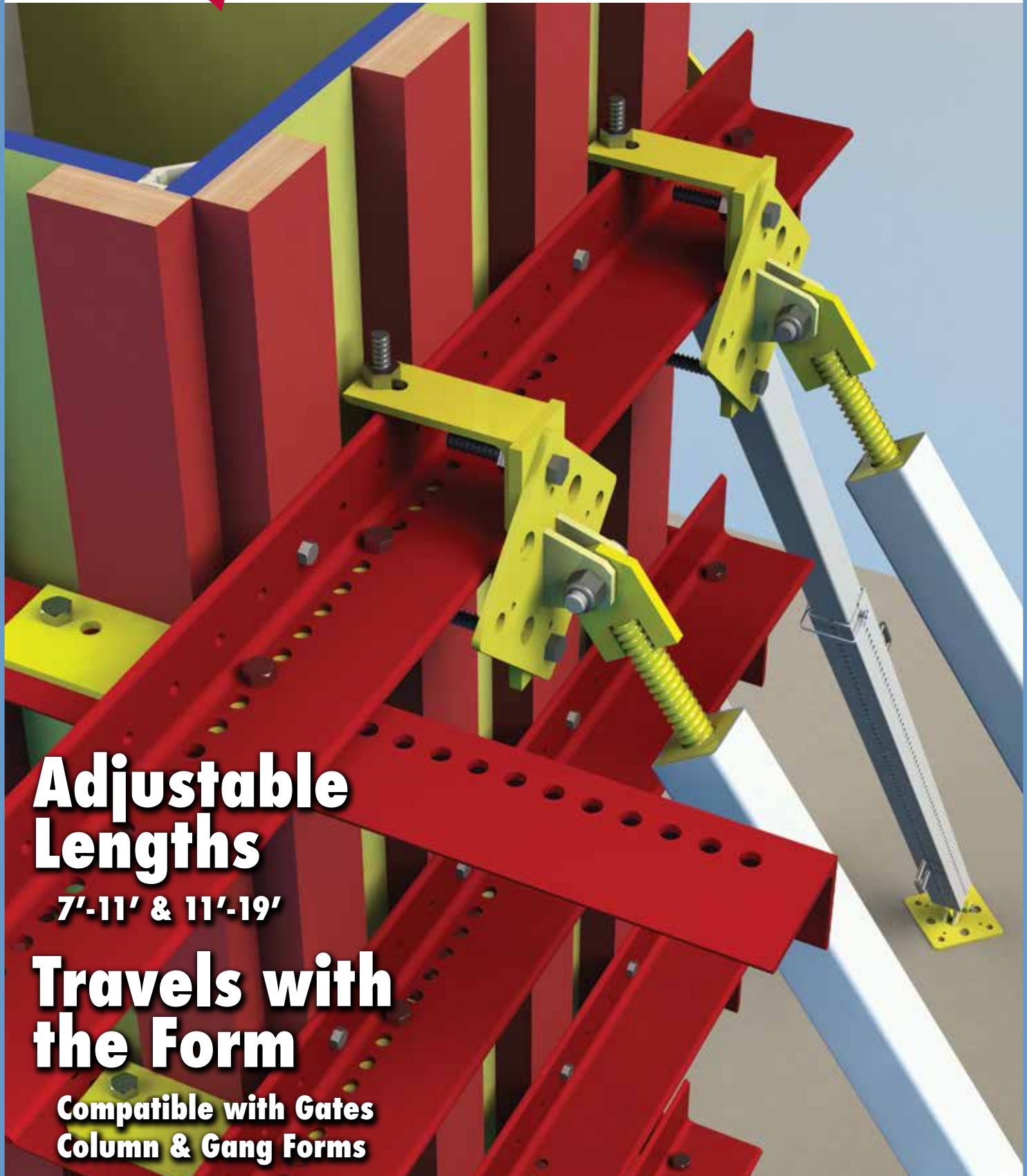




ADJUSTABLE FORM BRACE

for Column and Wall Forms



**Adjustable
Lengths**

7'-11' & 11'-19'

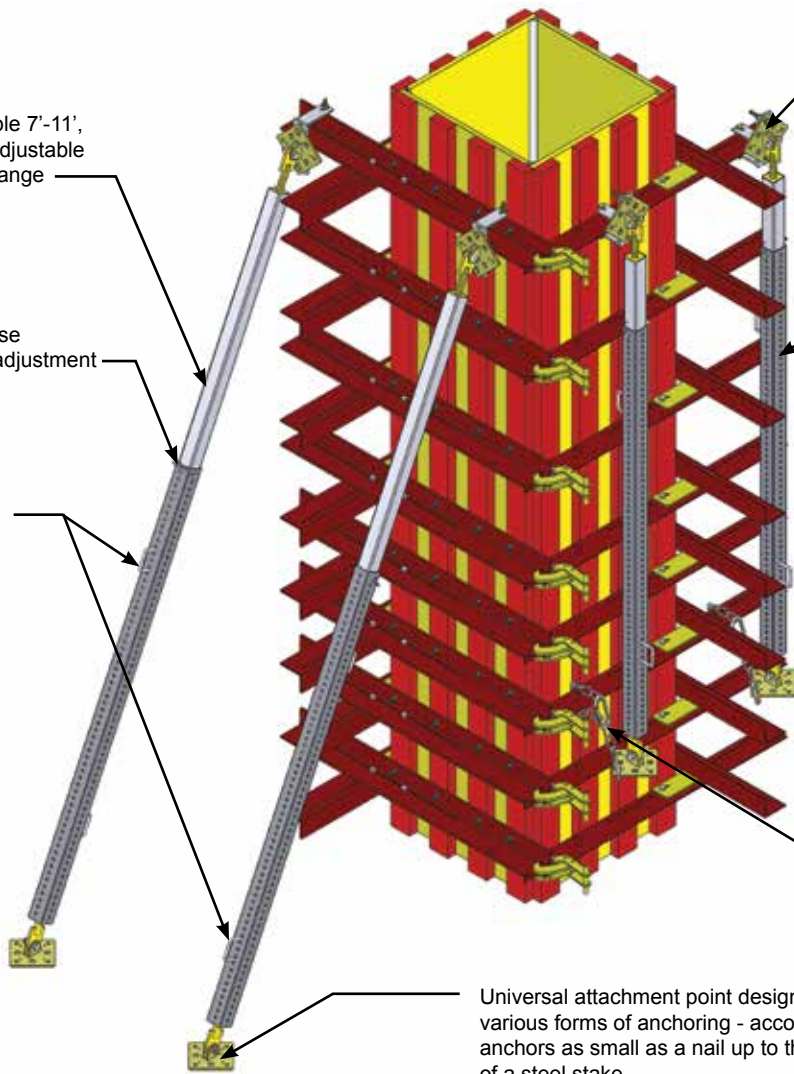
**Travels with
the Form**

**Compatible with Gates
Column & Gang Forms**

Two sizes available 7'-11', 11'-19' infinitely adjustable within the given range

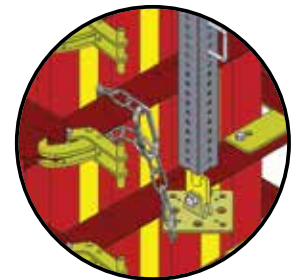
A quick easy to use pin allows for 1" adjustment

Two handles for easy adjustment



Universal attachment point - works with Gates Column forms and Gang forms

Designed to travel with the form (no loose parts) Quickly set & Strip Forms without having to remove and reattach bracing

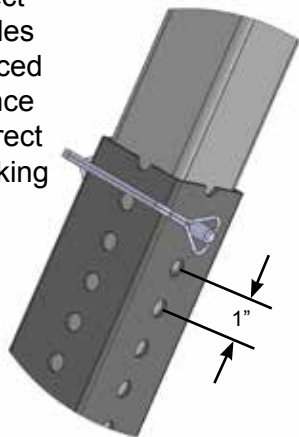


WARNING: Do not attempt to fly the brace unless the pin is engaged and the brace has been chained to the form

Universal attachment point designed for various forms of anchoring - accommodates anchors as small as a nail up to the diameter of a steel stake

Simple Two-Step Adjustment

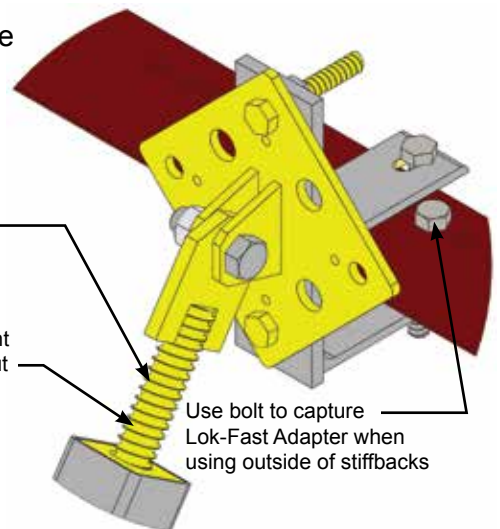
Step 1: Get the brace close to the correct position using holes conveniently spaced on 1" centers. Once you have the correct hole slide the locking pin through the hole.



Step 2: Use the fine tune adjustment to reach the desired location.

Setup Note:
When first setting brace try to center this adjustment for most flexibility

6 inches of screw adjustment allows for adjustment without resetting the brace

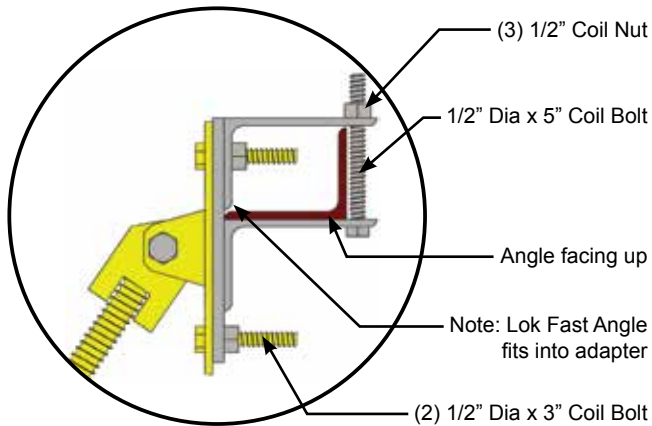


Use bolt to capture Lok-Fast Adapter when using outside of stiffbacks

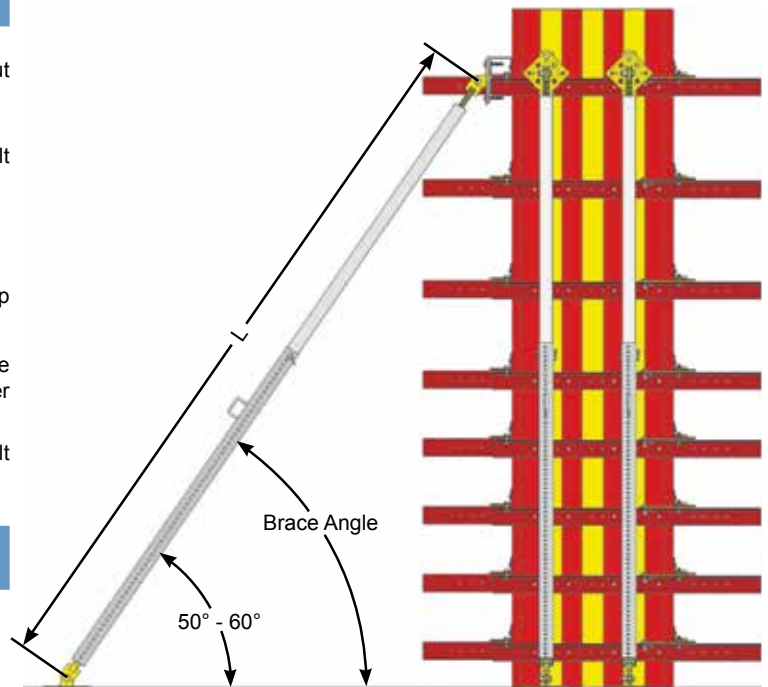
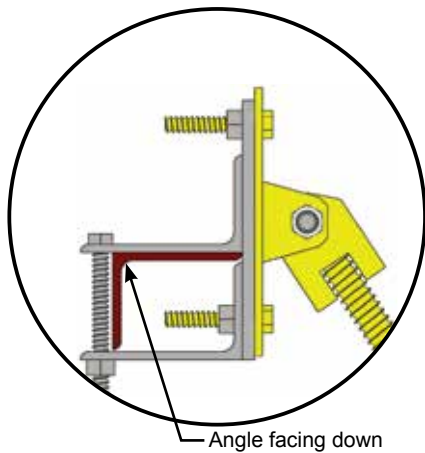
ADJUSTMENT OF THE ADJUSTABLE FORM BRACE



Angle Up Connection

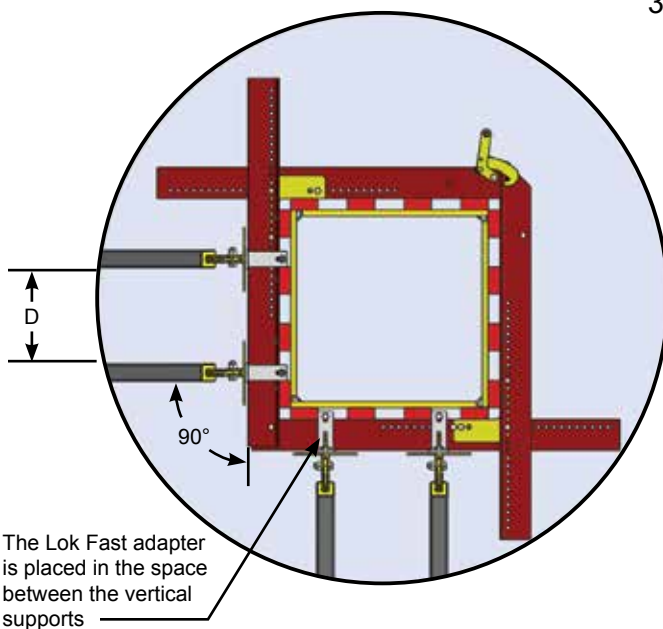


Angle Down Connection



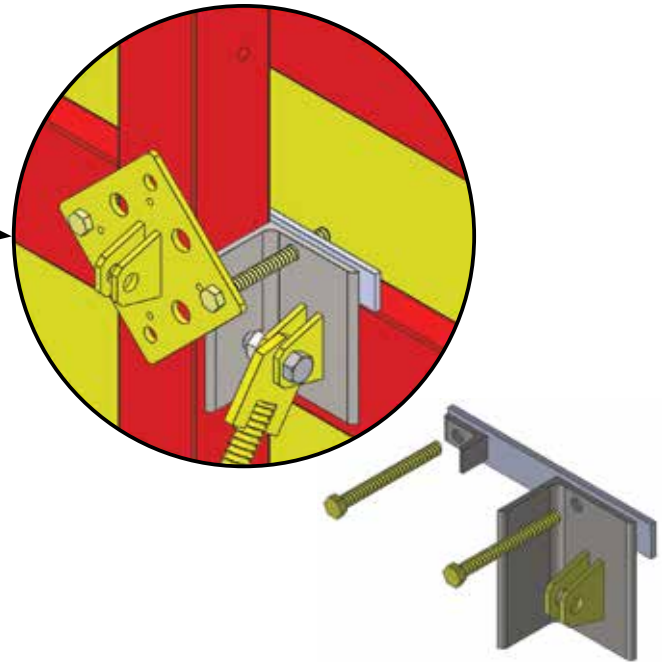
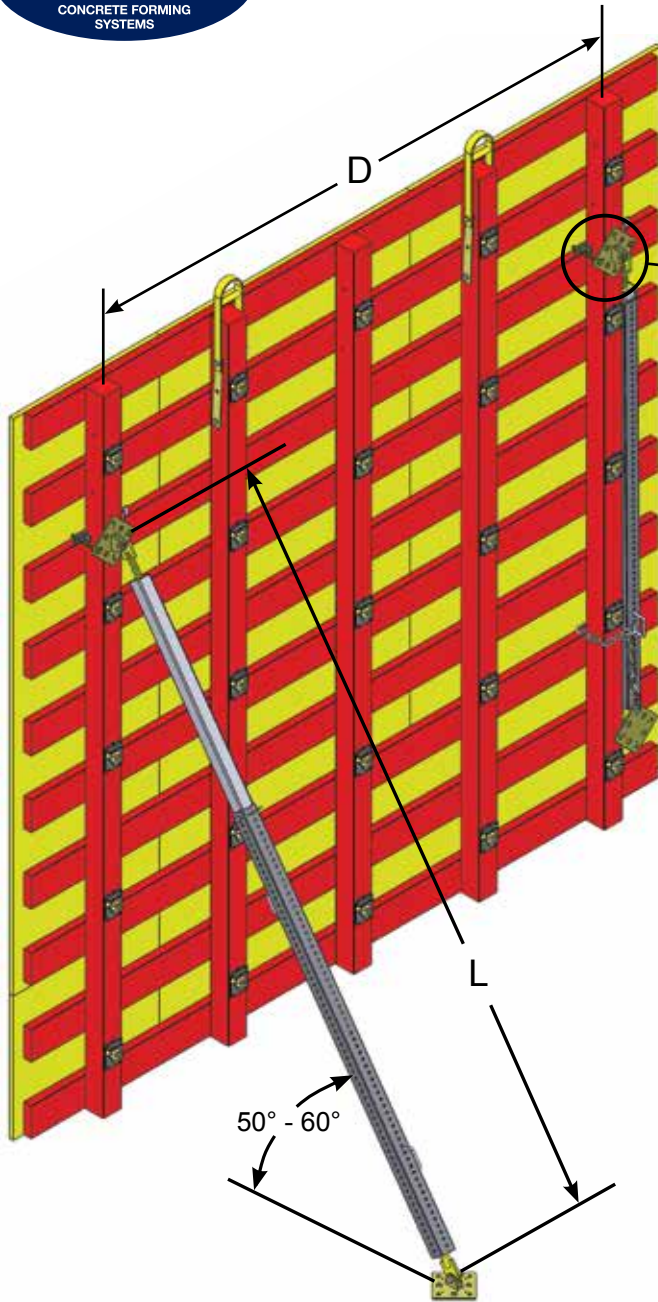
General Guidelines for Attachment

1. Distance "D" should be maximized without exceeding the rated safe working load of the brace.
2. Brace Angle should be kept within 50° - 60°. Angles > 60° will have excessive vertical force on the form, and angles < 50° will cause the brace to be extended further than necessary.
3. Brace should be installed perpendicular $\pm 5^\circ$ to the panel for maximum stability.



Length (L)	Safe Working Load
Less than 11'	4,000
11'	4,000
12'	3750
13'	3500
14'	3250
15'	3000
16'	2750
17'	2500
18'	2250
19'	2000

Length "L" shown in drawing above



#5 Adapter Kit

The #5 Adapter Kit provides a secure method of attaching the Adjustable Form Brace to the #5 Gang Form.

Usage of this kit is as easy as the following steps:

1. Remove the 5/8" bolt securing the bottom plate assembly from your brace.
2. Place the #5 Adapter on your form and secure using the (2) 5" Coil Bolts.
3. Place the end of your Adjustable Form Brace into the #5 Adapter Kit, using the 5/8" bolt removed in Step 1.

General Guidelines for Attachment

1. Distance "D" should be maximized without exceeding the rated safe working load of the brace.
2. Brace Angle should be kept within 50° - 60°. Angles > 60° will have excessive vertical force on the form, and angles < 50° will cause the brace to be extended further than necessary.
3. Brace should be installed perpendicular $\pm 5^\circ$ to the panel for maximum stability.

Length (L)	Safe Working Load
Less than 11'	4,000
11'	4,000
12'	3750
13'	3500
14'	3250
15'	3000
16'	2750
17'	2500
18'	2250
19'	2000

Length "L" shown in the top left drawing

ATTACHMENT TO #3 AND #9 FORM

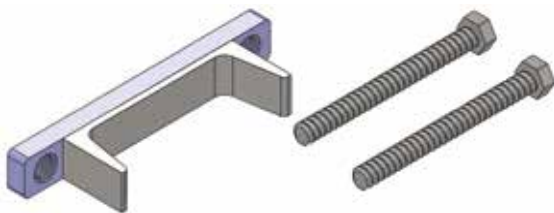


#9 Attachment

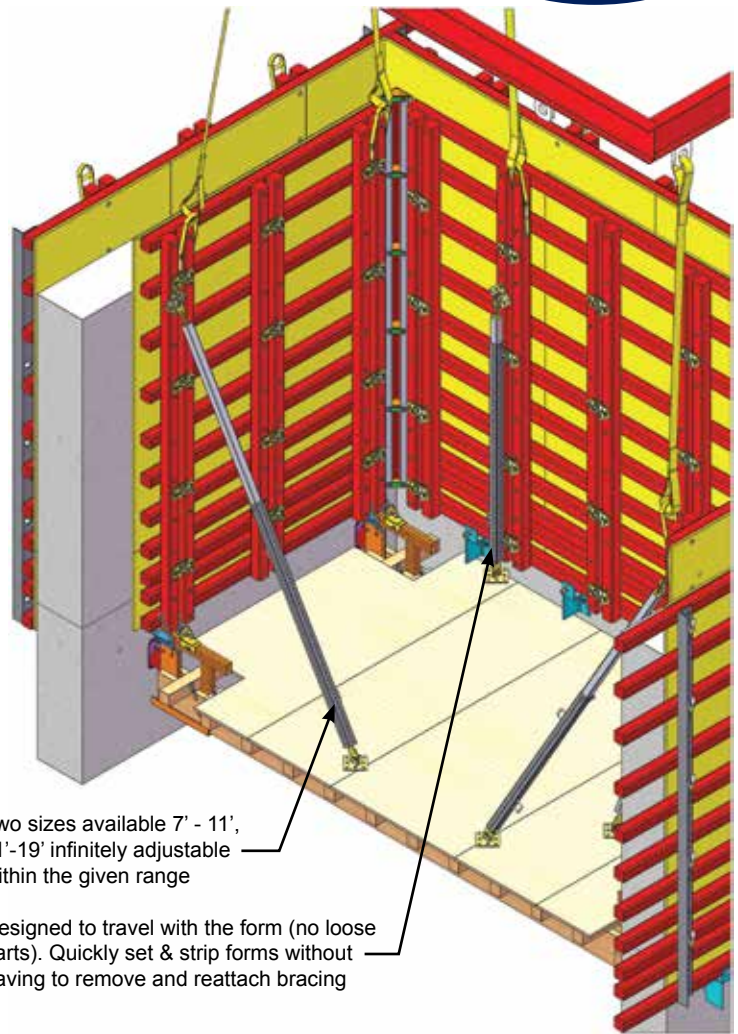


The Adjustable Form Brace can be attached to the #3 and #9 Gang Form using the 4x4 Lumber Adapter Kit. The brace can be attached to a vertical 4x4. This provides flexibility in the vertical location of the brace.

4x4 Lumber Adapter Kit



The 4x4 adapter kit comes with everything needed to connect the Adjustable Form Brace to your #3 or #9 wood form.



Two sizes available 7' - 11', 11'-19' infinitely adjustable within the given range

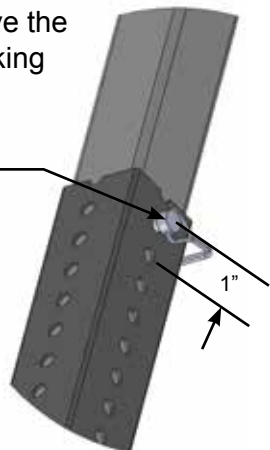
Designed to travel with the form (no loose parts). Quickly set & strip forms without having to remove and reattach bracing

IMPORTANT!!!! When using with Lift 'n Lock Platform always stay within rated platform loads.

Simple Two-Step Adjustment

Step 1: Get the brace close to the correct position using holes conveniently spaced on 1" centers. Once you have the correct hole slide the locking pin thru the hole.

Always make sure that the pin is engaged in a full hole, otherwise the brace will only provide support in one direction

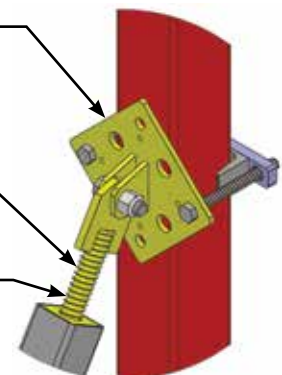


Step 2: Use the fine tune adjustment to reach the desired location.

Universal attachment point works with Gates Gang and Column forms

Setup Note: When first setting brace try to center this adjustment for most flexibility

6 inches of screw adjustment allows for adjustment without resetting the brace

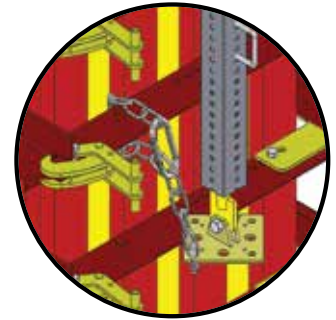


IMPORTANT!!!! Make sure to place pin in brace and close safety loop.

Can be Flown with the Form

The Adjustable Form Brace can be flown with the form as long as the following conditions have been met.

1. The pin is in place.
2. The securing chain is attached to the form and the bottom of the brace.



WARNING: Do not attempt to fly the brace unless the pin is engaged and the brace has been chained to the form.

Quick and Easy Setup

Quick and Easy setup can be accomplished by simply placing the column form in position, extending the Adjustable Form Brace and securing the bottom plate assembly.



Efficient Use of Storage Space

The Adjustable Form Brace can be easily stored with the Column Form. This compact storage option makes it easy to move into place when needed.



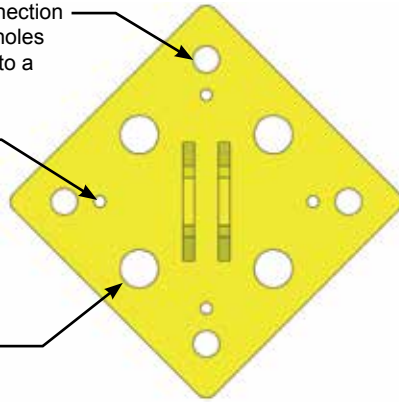
ATTACHMENT OF THE ADJUSTABLE FORM BRACE



Four 9/16" holes provide easy connection to the attachment brackets, these holes also provide a method of securing to a slab

Four 1/4" holes for light applications

Four 13/16" holes provide a method for staking or larger anchors if required



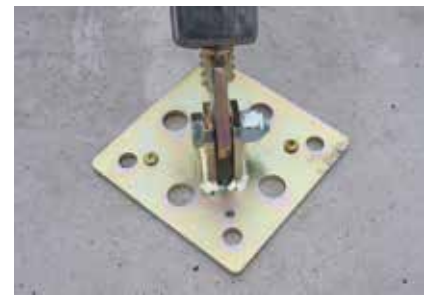
Attachment of the Adjustable Form Brace is made easy with a variety of connection options.



9/16" holes or 13/16" holes provide a method for attaching to anchors



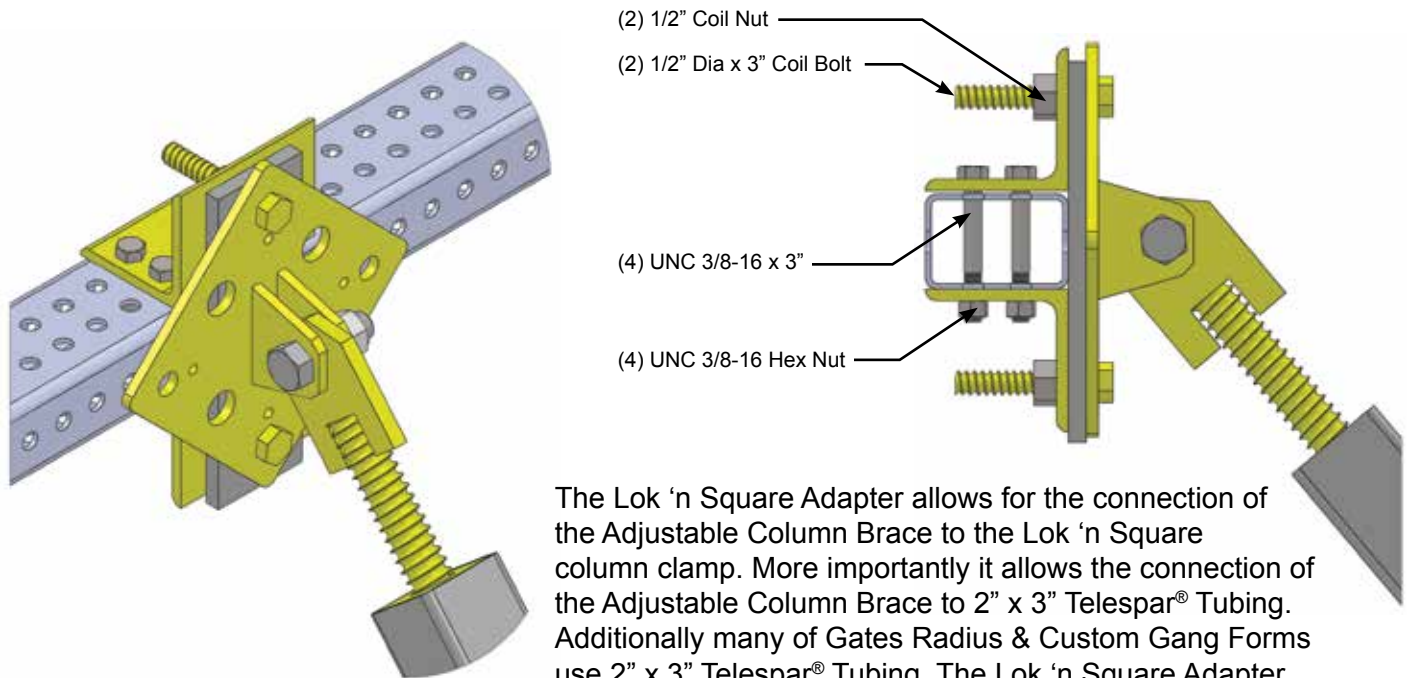
Four 13/16" holes provide a method for staking



Four 1/4" holes provide locations for 1/4" fasteners

WARNING: Always make sure to use an anchor that is adequately matched to the intended load.

Lok 'n Square/Telespar Adapter



(2) 1/2" Coil Nut

(2) 1/2" Dia x 3" Coil Bolt

(4) UNC 3/8-16 x 3"

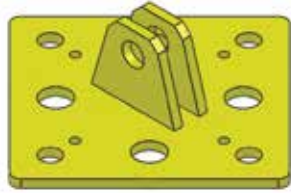
(4) UNC 3/8-16 Hex Nut

The Lok 'n Square Adapter allows for the connection of the Adjustable Column Brace to the Lok 'n Square column clamp. More importantly it allows the connection of the Adjustable Column Brace to 2" x 3" Telespar® Tubing. Additionally many of Gates Radius & Custom Gang Forms use 2" x 3" Telespar® Tubing. The Lok 'n Square Adapter provides an easy connection to any form using 2" x 3" Telespar® Tubing.



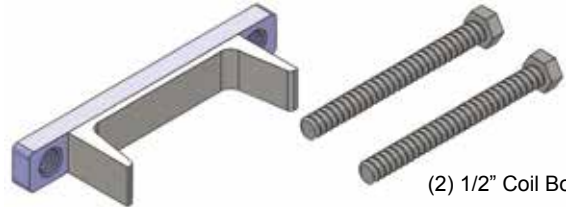
There are two sizes of the Adjustable Form Brace.

1. **7' - 11' Adjustable Form Brace** - telescopes to 6'6" and 11' 5" including 6 inches of screw adjustment. (Item Code: 177007)
2. **11' - 19' Adjustable Form Brace** - telescopes to 10' 7" and 19' 5" including 6 inches of screw adjustment. (Item Code: 177010)



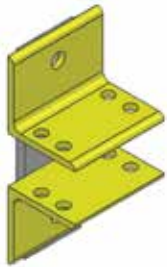
(1) 5/8-11 x 2"
(1) 5/8-11 Nylon Lock Nut

Form Brace Base Plate with Bolt is available for purchase as a separate assembly. Connection bolt is included. (Item Code: 704201)



(2) 1/2" Coil Bolt x 5"

4x4 Lumber Adapter Kit comes with everything needed to connect the Adjustable Form Brace to your #3 or #9 wood form. (Item Code: 177014)



Bolt Package
(2) 1/2" Coil Bolt x 3"
(2) 1/2" Coil Nut
(4) 3/8-16 x 3"
(4) 3/8-16 Nut



Lok 'n Square/Telespar
Adapter Bolt Package only
(Item Code: 157926B)

Lok 'n Square/Telespar Adapter - provides connection between the Adjustable Form Brace and the Lok 'n Square Column Clamp. Supplied with all bolts needed to attach the Adjustable Form Brace.

Lok 'n Square/Telespar Adapter (Item Code: 157926)



Bolt Package
(2) 1/2" Coil Bolt x 3"
(1) 1/2" Coil Bolt x 5"
(3) 1/2" Coil Nut



Lok Fast Adapter Bolt
Package only
(Item Code: 157925B)

Lok Fast Adapter - provides connection between the Adjustable Form Brace and the Lok Fast Column Clamp. Supplied with all bolts needed to attach the Adjustable Form Brace.

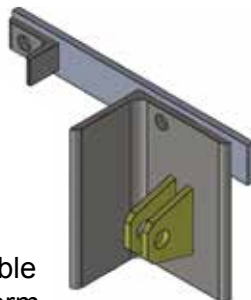
Lok Fast Adapter (Item Code: 157925)



(2) 1/2" Coil Bolt x 5"

#5 Adapter AFB - provides connection between the Adjustable Form Brace and the #5 Gang Form. Supplied with all bolts needed.

#5 Adapter AFB
(Item Code: 177011)



Safety Pin AFB - Grade 8 Pin with clasp provides locking mechanism for brace.

Safety Pin
(Item Code: 177012)



Safety Chain AFB - provides a method to secure Adjustable Form Brace to form for flight.

Safety Chain
(Item Code: 177013)