



PRODUCT CATALOG  
**LOCK-FAST™**  
**COLUMN CLAMP**

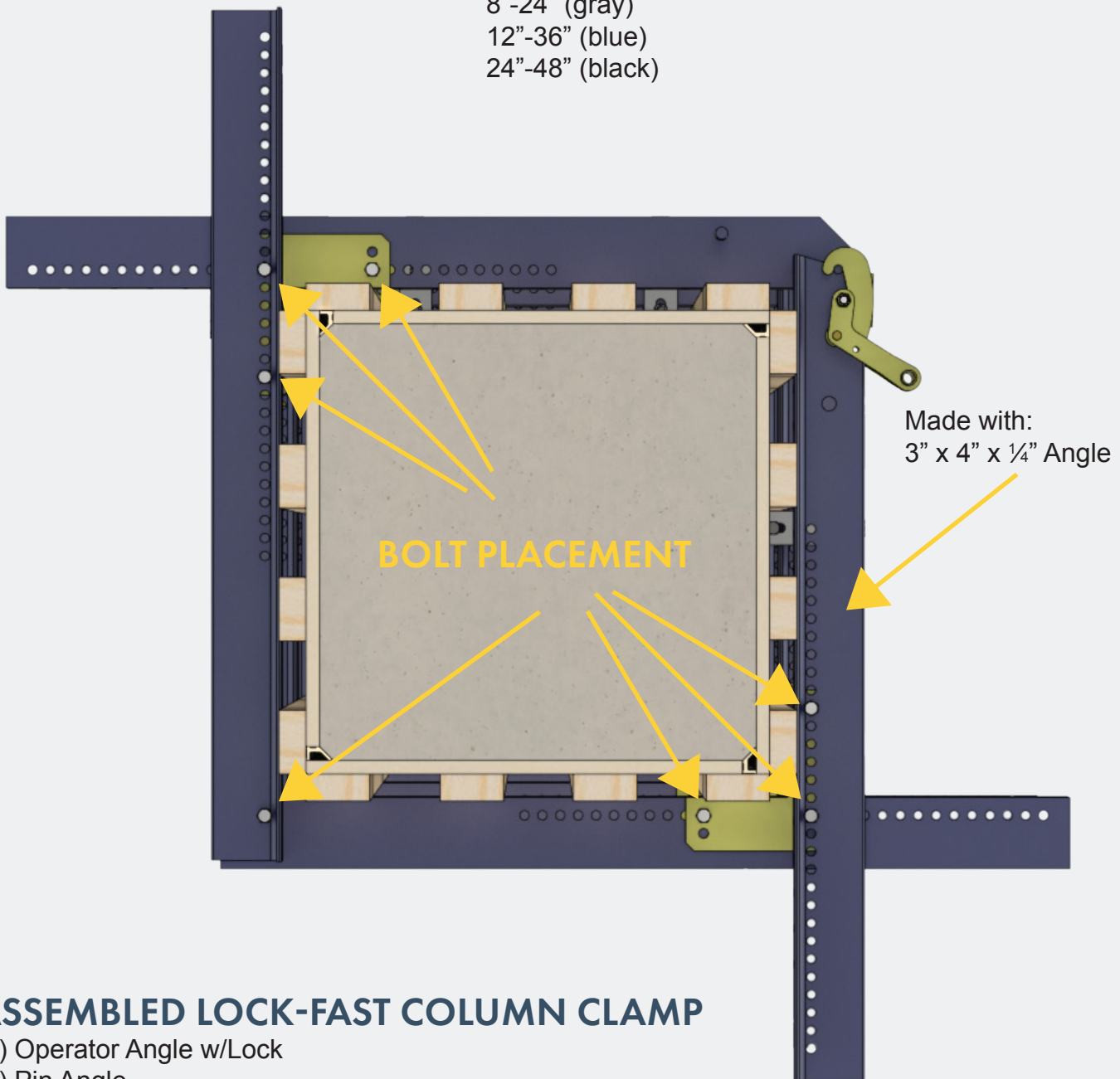
*Gates®*





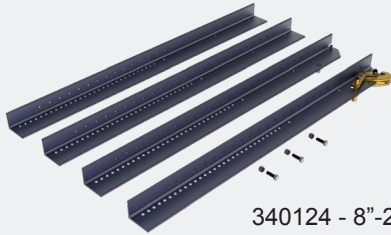
### SIZE RANGES

- 8"-24" (gray)
- 12"-36" (blue)
- 24"-48" (black)



### ASSEMBLED LOCK-FAST COLUMN CLAMP

- (1) Operator Angle w/Lock
- (1) Pin Angle
- (2) Back Angles
- (3) 1/2" x 1 1/2" Hardened Bolts w/Lock Nuts
- (2) Squaring Corners w/2 Bolts (sold separately)



340124 - 8"-24" (gray)  
340136 - 12"-36" (blue)  
340148 - 24"-48" (black)

**LOCK-FAST COLUMN CLAMP**

- Includes (1) Operator Angle w/Lock, (1) Pin Angle, (2) Back Angles, (3) 1/2" x 1 1/2" Grade 5 Bolts w/lock nuts
- Made from 3" x 4"x1/4" angle
- Standard clamps available in 3 size ranges 8"-24", 12"-36", and 24"-48"
- Priced per each



340324 - 8"-24" (gray)  
340336 - 12"-36" (blue)  
340348 - 24"-48" (black)

**OPERATOR ANGLE W/LOCK**

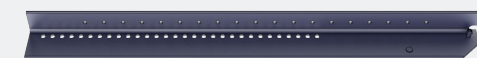
- Includes (1) Operator Angle and (1) Lock Assembly
- Standard angles available in 3 size ranges 8"-24", 12"-36", and 24"-48"
- Replacement for damaged or worn-out angles
- Priced per each



340224 - 8"-24" (gray)  
340236 - 12"-36" (blue)  
340248 - 24"-48" (black)

**OPERATOR ANGLE W/O LOCK**

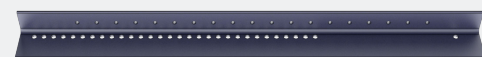
- Includes (1) Operator Angle
- Standard angles available in 3 size ranges 8"-24", 12"-36", and 24"-48"
- Replacement for damaged or worn-out angles
- Priced per each



340424 - 8"-24" (gray)  
340436 - 12"-36" (blue)  
340448 - 24"-48" (black)

**PIN ANGLE**

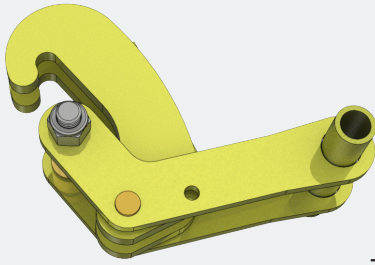
- Includes (1) Pin Angle
- Standard angles available in 3 size ranges 8"-24", 12"-36", and 24"-48"
- Replacement for damaged or worn-out angles
- Priced per each



340524 - 8"-24" (gray)  
340536 - 12"-36" (blue)  
340548 - 24"-48" (black)

**BACK ANGLE**

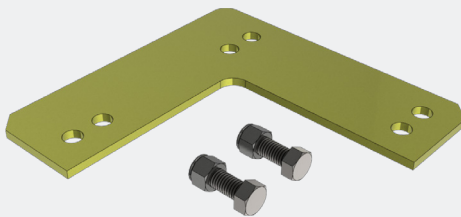
- Includes (1) Back Angle
- Standard angles available in 3 size ranges 8"-24", 12"-36", and 24"-48"
- Replacement for damaged or worn-out angles
- Priced per each



700562

**LOCK ASSEMBLY**

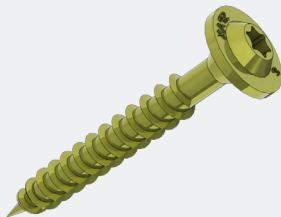
- Includes (1) Lock Assembly and (1) ½"-13 NC x 2 ½" GR-5 bolt, and (1) nylon lock nut
- Do not use bolts less than GR-5 quality
- Replacement for damaged or worn-out locks
- Priced per each



156018

**SQUARING CORNER**

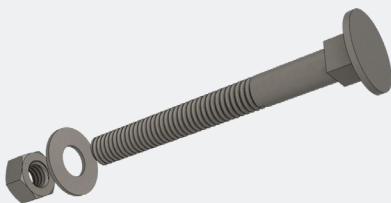
- Includes (1) Squaring Corner and (2) bolts
- Install in opposite corners of the Column Clamp to hold column square
- Stabilize form while setting and stripping
- Priced per each



600285

**5/16" X 2 3/8" SPAX POWER LAG**

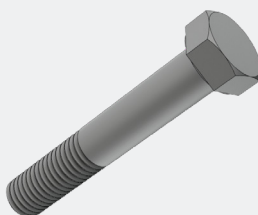
- Includes 5/16" x 2 3/8" Spax Power Lag
- Use screws to easily attach Column Clamps to form with 3/8" holes spaced along clamp angles
- Priced per 100



600169

**5/16" X 3" FLAT HEAD BOLTS W/NUTS & WASHERS**

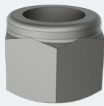
- Includes 5/16" x 3" bolt, with nuts and washers
- Use bolts to easily attach Column Clamps to form with 3/8" holes spaced along clamp angles
- Priced per 100



600535

**MACHINE BOLT - HARDENED WITHOUT NUT**

- Includes ½"-13 NC x 1 ½" GR-5 Machine Bolts
- Use bolts to fasten the two back angles together to form a hinge, diagonal from the lock
- Do not use bolts less than GR-5 quality
- Order with lock nuts
- (3) included with purchase of complete Column Clamp Assembly
- Priced per each



600544

**1/2" LOCK NUT**

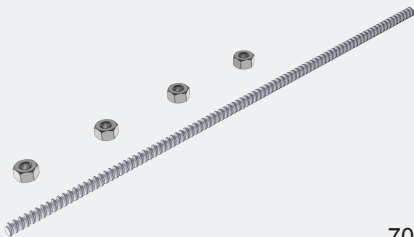
- Includes (1) 1/2" Lock Nut
- Must be used with hardened machine bolts on all 1/2" column clamp bolts for safety and functionality
- Recommended that new lock nuts be used when adjusting column to another size
- (3) included with purchase of complete Column Clamp Assembly
- Priced per each



156037

**COLUMN FORM PICK POINT**

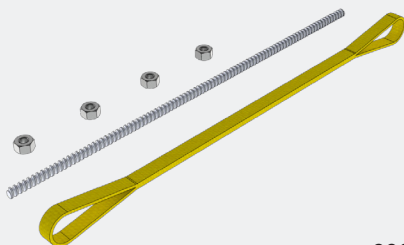
- Includes (1) Pick Up Point, all required bolts, and (1) 3' Coil Rod/ Nut Assembly
- Install and adhere to weight restrictions detailed in Gates Lock Fast Pick Points Safety Bulletin
- Priced per each



700649

**COIL ROD/NUT ASSEMBLY**

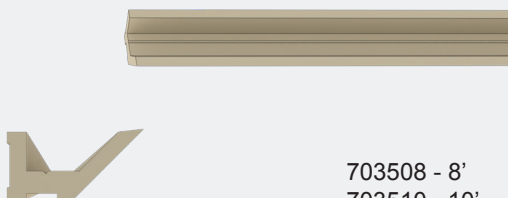
- Includes (1) 36" Coil Rod and (4) 1/2" Coil Nuts
- Replacement for damaged or worn-out rods or nuts
- Priced per each



600355

**TWISTED EYE SLING W/ASSEMBLY**

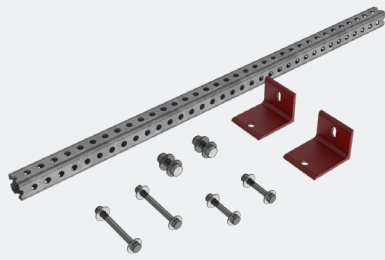
- Includes (1) Nylon Pick Up Strap, (1) 36" Coil Rod, (4) 1/2" Coil Nuts
- Install and adhere to weight restrictions detailed in Lock Fast Pick Points Safety Bulletin
- Priced per each



703508 - 8'  
703510 - 10'  
703512 - 12'

**3/4" PLASTIC CHAMFER STRIP**

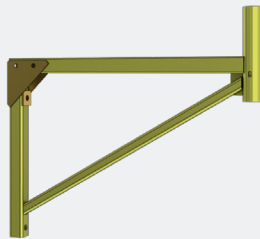
- Includes (1) 3/4" Plastic Chamfer Strip
- Produces a clean, chamfered corner and allows plywood to be cut to concrete dimensions
- Priced per each



078103

**COLUMN FORM SCAFFOLD ADAPTER**

- Includes (1) Telespar, (2) Attachment Angles, and all necessary nuts and bolts
- Provides a secure attachment point for the 24" Scaffold Bracket
- Priced per set



078101

**24" SCAFFOLD BRACKET**

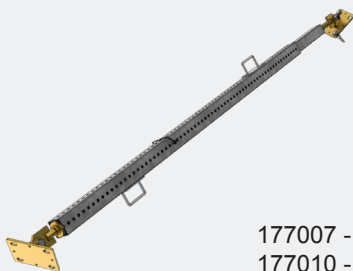
- Includes (1) Scaffold Bracket
- Designed to be easily bolted to gang form
- Allows for 23 1/2" for planking
- Priced per each



078112

**SAFETY RAIL POST**

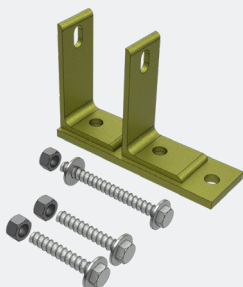
- Includes (1) Safety Rail Post
- Use in conjunction with Gates Scaffold Brackets to meet OSHA guardrail standards
- Priced Per each



177007 - 7'-11'  
177010 - 11'-19'

**ADJUSTABLE FORM BRACE**

- Includes (1) Adjustable Form Brace with attached top and bottom plates
- Available in 2 size ranges 7'-11' and 11'-19' both include 6" of screw adjustment
- Requires Lok-Fast Adapter, purchased separately
- Priced per each



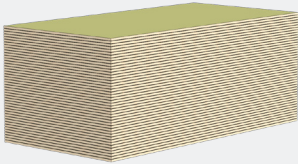
177020

**LOCK-FAST ADAPTER**

- Includes (1) F Bracket, (3) 1/2" Coil Nuts, (1) 1/2" x 5" Coil Bolt, and (1) 1/2" x 3" Coil Bolt
- Securely connects the Adjustable Form Brace and the Lok-Fast Column Clamp
- Priced per each



**3/4" HIGH QUALITY FORM PLYWOOD**



**100/100**  
400015 - 4'x8'  
400017 - 4'x10'  
400019 - 4'x12'  
**100/30**  
400003 - 4'x8'

- Available in 4'x8', 4'x10', 4'x12', and custom sizes by request
- 100/100 HDO, 100/30 HDO, barrier film
- Priced per sheet

**NOTES**



[www.gatesconcreteforms.com](http://www.gatesconcreteforms.com)



1 (800) 333-8382



90 S. Fox St.  
Denver, CO 80223



[/GatesConcreteForms](https://www.facebook.com/GatesConcreteForms)

